

R.S. PRUSSIA

Issue Number 66

I.A.R.S.P.C. Inc.

October 2005



In This Issue

Notes from the Vice President
Terry Coy 2
Get Well Soon 2
 Notes from the Secretary & Treasurer
Linn & Leslie Schultz 3
 Thank you to Embassy Suites 4
 Raffle and Free Night Winners 4
 Message from the Director 4
 Ice Cream Social 5
 Cocktails 5
 2006 Convention 6
 R.S. Prussia and More 6
 With Sympathy 6
 Thank you 6
 Do It Yourself Auction 7
 Room-To-Room Viewing 8
 Board Meeting Minutes 9
 Room-To-Room Viewing 10
 First Time New Member Meeting 11
 Welcome Meeting 11
 Room-To-Room Viewing 12
 Business Meeting Minutes 13
 Room-To-Room Viewing 14
 Sunday Board Meeting 15
 Room-To-Room Viewing 16
 Booyaa 17
 Welcome New Members 17
 Address Change 17
 Wanted 17
 Room-To-Room Viewing 18
 The Tradition Continues
Linda L. Van Gundy 19
 Frank & Gabby 19
 2005 Convention Seminar
Lee Marple 20-23
 Future Convention Sites 23
 Surely You Didn't Pay
 Annette Hite 24
 Jack Bailey's Epergne 24
 Banquet 25-27
 2005 Convention Auction 28-32

*The International Association
of R.S. Prussia Collectors, Inc.*

*Visit Us At
<http://www.rsprussia.com>*

President

George Kandel, Indiana
260-868-5263
vinmark@fwi.com

Vice President

Terry Coy, Kentucky
502-244-5391
user258442@aol.com

Secretary

Leslie Schultz, Iowa
563-678-2658
lschultz@netins.net

Treasurer

Linn Schultz, Iowa
563-678-2658
lschultz@netins.net

Past President

Jenny Lou Huston, Texas
210-494-2791
phust@swbell.net

Directors

John Titus, Iowa
563-785-4438
imagesinink@iowatelecom.net

Joy Litteral, Ohio
937-666-5481

CJ-Antiques@Columbus.rr.com

Miriam Corban, New Zealand
64-9-838-8947
orchids@xtra.co.nz

Wanda Faye Krick, Tennessee
931-393-1015
joekrick@charter.net

Grady Hite, North Carolina
336-924-8657
ahite@triad.rr.com

Richard Habenicht, Illinois
815-838-8456
reed1021@comcast.net

Recording Secretary

Theresa Newcomer, Pennsylvania
717-653-5976
chocset@aol.com

Historian

Mary Lou Bougher, Kentucky
502-247-7155
mlkbougher@msn.com

Newsletter Editor

Linda Titus, Iowa
Phone 563-785-4438
Fax 563-785-4673
PO Box 983
Durant, IA 52747-0983
imagesinink@iowatelecom.net

Web Page Editor

Ken Jinde, Canada
kenj89@rogers.com



Notes from the Vice President

Terry Coy

This is to inform everyone that our President, George Kandel, had a mild stroke shortly after the convention. He was taken to a rehabilitation center in Ft. Wayne for two weeks and then was moved to a rehab center in his home town of Butler. His stroke did not cause any major paralysis. His rehabilitation is revolved around being able to maintain his balance when walking.

We have been in constant contact with both Gwyn and George several days a week. Frances and I went to visit George on the weekend of September 16th. We arrived and he was going into his rehabilitation for the morning. Then, unbeknownst to us, he could go home for the day over the entire weekend, going back to rehab nightly. His improvement from Friday to Saturday, we

thought, was tremendous and is still improving daily.

What do you think he wanted to talk about? It was how great the convention was in Kansas City, especially the great job the Heartland Club had done and the good selection of porcelain that Woody Auction Co. had for us. He also stated that it seemed to him (which I also agreed) that the social gatherings between the members were outstanding. As always he thought our members did a great job with their seminars. He also had on his mind the Michigan meeting, the first part of October and the KY-TN Meeting the end of October, saying that he is planning on attending these. I said to him "we will see," but knowing his strong will to improve, his condition will get much better.

Let us all keep him and all of our sick in our prayers.

Get Well Soon

George Kandel suffered a mild stroke after convention. Please keep him in your thoughts and prayers.

Since July, **Mary McCaslin** has been ailing with a back injury caused by a bad fall. She will have surgery this month to try to correct the problem. Please keep her in your thoughts and prayers.

Newsletter Policy

This newsletter is the voice of the members of the International Association of R.S. Prussia, Inc. We welcome articles from members. We ask that articles be constructive and contribute positively to the welfare of the club and its members. The newsletter is printed four times a year. Publication mail dates are February 15, April 15, June 15, and October 15. Articles submitted for publication are due to the editor by the 15th of the month prior to publication and are subject to editing. (For example, items for the April issue would be due by March 15th) We look forward to hearing from you!



Notes from the Secretary and Treasurer

Linn & Leslie Schultz

We hope you all agree that the 2005 International Convention held in Kansas City was great! For those of you who weren't fortunate enough to attend this year, you missed a good one. As always, pre-registrations numbers were down, but registrations picked up as the weekend came closer. To those who thought they had pre-registered but found they hadn't, don't worry—we all seem to be joining the "Now I can't remember why I walked into this room" club (yours truly included).

We wish our International president, George Kandel, the best

for a speedy recovery—we need you at our helm for one more year. Listed below is some information that we shared at the 2005 convention that you might find interesting. Some numbers show an increase while others show a continual decrease. We all need to be active in recruiting new members to the International Association. How about making an early New Year's resolution that you will recruit at least one new member for 2006?

We wish all of you the best for the remainder of 2005 and hope to see all of you again in 2006!

International Association of R.S. Prussia Collectors, Inc. New Memberships:

2003 – 62
2004 – 18
2005 – 45
2005 not renewed – 52

Total Memberships:

2002 – 545
2003 – 507
2004 – 476
2005 – 471

Convention Registrations:

2003 – 188
2004 – 187
2005 – 152

TREASURER'S REPORT

International Association of R.S. Prussia Collectors, Inc Financial Statement June 1, 2004 to May 31, 2005

Beginning Balance June 1, 2004:	\$ 29,732.75	Expenses:		
Income:		Convention 04	Ice Cream social	\$ 240.07
Convention 05 Banquet	\$ 510.00		Banquet	\$ 5,240.72
(to 5/31/05) Mugs	\$ 25.00		Breakfast	\$ 507.60
Registration	\$ 440.00		Speakers rooms(3)	\$ 309.12
			Officer rooms (6)	\$ 618.24
Convention 04 Auction	\$ 2,500.00		Meeting rooms	\$ 557.55
Banquet	\$ 2,835.00		Ent IC social & banquet	\$ 1,100.00
Breakfast	\$ 260.00		Hospitality rm	\$ 658.79
Mugs	\$ 230.00		Banner	\$ 64.96
Raffle	\$ 1,425.00		Scrapbook	\$ 215.70
Registration	\$ 2,800.00		Free room drawing	\$ 206.08
Do it yourself auction	\$ 4,035.00		Refunds	\$ 377.00
Miscellaneous	\$ 1,276.95		Mugs	\$ 419.74
Member dues	\$ 13,516.00		Travel & office expence	\$ 988.64
Interest	\$ 341.37	Printing	newsletters (4) P,P &L	\$ 15,332.71
Total Income	\$ 30,194.32		Convention packers	\$ 342.60
			Association Pamphlets	\$ 443.17
			Dues reminders	\$ 270.55
		Postage	general postage	\$ 284.87
		Miscellaneous	Bond, Lic, PO Box, Acc Dues	\$ 196.00
		Convention 05	Raffle (2)	\$ 470.00
			Banner	\$ 47.70
			Hospitality room	\$ 1,000.00
			Entertainment	\$ 750.00
		Total Expenses		\$ 30,641.81
		Net Change		\$ (447.49)
		Ending Balance May 31, 2005		\$ 29,285.26



PRESIDENT
George Kandel
Butler, Indiana

VICE PRESIDENT
Terry Coy
Louisville, Kentucky

SECRETARY
Lealie Schultz
Lost Nation, Iowa

TREASURER
Linn Schultz
Lost Nation, Iowa

BOARD OF DIRECTORS
Grady Hite
Winston Salem, North
Carolina

Richard Habenicht
Lockport, Illinois

Mariene Howard
Cincinnati, Ohio

Assid Corban
Auckland, New Zealand

Faye Krick
Tullahoma, Tennessee

John Titus
Durant, Iowa

Jenny Lou Huston
San Antonio, Texas

**RECORDING
SECRETARY**
Theresa Newcomer
Mount Joy, Pennsylvania

NEWSLETTER EDITOR
Linda Titus
Durant, Iowa

HISTORIAN
Mary Lou Bougher
Mayfield, Kentucky

July 29, 2005

To the Staff of the Embassy Suites, Kansas City, Missouri:

On behalf of the International Association of R.S. Prussia Collectors, Inc., I would like to extend our sincere appreciation for the fine service your staff has provided to our R.S. Prussia Association 2005 Convention. Our members have thoroughly enjoyed and expressed their appreciation for your beautiful facility, the spacious suites, the elaborate complimentary breakfasts, and the evening cocktail hours. This has been one of the best conventions we have experienced in years due to your attention to detail and wonderful cooperation.

Again, I would like to extend our appreciation and a sincere thank you for making our stay in Kansas City a very memorable one.

Sincerely,



George Kandel
President

And the Winners Are... Raffle

Thanks to all who participated in the raffle this year. Again it was a financial success for the club.

Paul Fischer

*Medallion Portrait
Dresser Tray*



**Jenny Lou
Huston**

*Floral Dresser
Tray*

Jenny again was one of the members who could not attend but purchased tickets. Thanks to all of those who purchased tickets but could not attend.

Free Night

Winners of the drawing for the free night's stay were:

Fay & Marsha Waterbury from
Wichita, KS (first time attendees), and
Maurice & Peggy Fulkerson from
Sparta, MI.

Director's Message

OUR TRIP HOME

Wow! What a convention. Two auctions, room viewing and a wonderful hotel we stayed in. We really enjoyed ourselves. First, I would like to thank everyone who voted for me. I appreciate your confidence in me. I hope to help find new ways to increase our memberships. I have thought about my first article for the newsletter and decided to write about our trip home. My husband and I decided to take our time going home and do a little antiques. We have always wanted to stop and check out some of the antique malls on the way home, but never seem to have the time.. The one thing that I noticed in our stops were that a lot of the antique malls

have craft things and newer items. To me, an antique should be at least 40 years old (Guess that makes me an antique!!) Don't get me wrong, I like crafty items also but when I go to an antique mall I like to look at old stuff not new stuff. We found some great little antique stores. Most of them were what I call mom and pop stores. The bigger malls seem to have more of the craft items. We found in Illinois a good stretch of antique stores on RT 40 called, OLDE NATIONAL TRAIL ANTIQUES. They have a map that gives you 21 stores with their locations and a general idea of what they have and their operating hours. (Rt 40 runs parallel to I-70 so you still have the highway for traveling) We did

manage to find some Prussia. If the piece was marked, the price was marked higher than the pieces that had no marking. We did manage to find some good deals, not all was Prussia. We did enjoy the ride home with time to get out and stretch our legs with the hope of finding that great buy that everyone looks for. For me, that is the best part of antiques. The thrill of finding that great piece for an awesome price. Needless to say, we didn't find that great piece, but that doesn't stop us from hoping and hunting. I believe that we all have that desire. That's what gets us to stop and look in the malls and shops, plus the chance to tell the story about your great find...

Joy Litteral

Jce Cream Social Thursday, July 31, 2005

PRUSSIA



COCKTAILS

PRUSSIA

COCKTAILS

PRUSSIA



CONVENTION 2006

JULY 27-30, 2006

SHERATON DETROIT NOVI

21111 HAGGERTY ROAD
NOVI, MICHIGAN 48375 UNITED STATES
PHONE (248) 349-4000 OR (886) 873-4180
FAX (248) 349-4066

\$99.00 PLUS TAX

ASK FOR THE INTERNATIONAL ASSOCIATION OF
R S PRUSSIA RATE
THIS RATE WILL NOT APPLY AFTER
THE CUT OFF DATE OF JULY 17, 2006.



R S Prussia & More Schlegelmilch Porcelain featuring Cobalt

Written by
Mary McCaslin



COMING SOON \$29.⁹⁵

This hardbound book contains over 2,000 R.S. Prussia pieces. R.S. Prussia and other Schlegelmilch porcelains are displayed along with descriptions and suggested values. Cobalt is a feature with several examples. The book contains articles that include factory and family history, categories (animal, bird, portrait, scenic, and floral), points of interest, marks, and many rare pieces that have never been seen in books.

To Order: Email Mary McCaslin at
maryjack@indy.rr.com or write
6887 Black Oak Court East
Avon, IN 46123

THANK YOU!

Wow!!! What a great convention we had in Kansas City. A special thanks to the Heartland Club. By the way, did you see the cakes that Lois Walden had made. One with the Bird of Paradise, the other one was a cobalt vase with a portrait on it. So that the hospitality room would not run out of cookies, Jim Walden kept his eye on me. Great cookies, they were delicious. What more can I say about the hospitality that the Heartland Club showed.

Lee Marple presented another excellent seminar, which was well attended. Room displays were very diversified. Room sales seem to be brisk, the members were buying and many discussions were going on followed by great fellowship. Woody Auction Co. had another great sale for the club which was well attended. We also would like to thank everyone who participated in making this convention a success! MICHIGAN, HERE WE COME!

Terry

With Sincere Sympathy

The club extends its deepest sympathy to the family of **Marge Johnson** who died on August 18, 2005. Our thoughts go out to her son, Gerald Johnson, and the rest of her family and friends.

The club extends its deepest sympathy to the family of **Barbara Elliot** of Zanesville, Ohio who died on August 8, 2005. Our thoughts go out to her family and friends.

*The Howard Greenberg
"Do-It-Yourself Auction"
Friday, July 29, 2005*



*This year's Do-It-Yourself
auction grossed over
\$3,405. Thanks to everyone
who participated to make
this auction a success!!!*



*Thanks to these
young RS Prussia
auctioneers in
training!*
**ALLISON THOMAS
HAROLD DODDS JR.
BEN THOMPSON
ANGELA ATKINS**



ROOM-TO-ROOM VIEWING



Minutes From The Meetings



Board Meeting Thursday, July 28, 2005

The meeting was called to order at 10 a.m. by President George Kandel, IN. Officers present were Vice President Terry Coy, KY; Secretary Leslie Schultz, IA;



Treasurer Linn Schultz, IA. Board members present were Assid Corban, New Zealand; Marlene Howard, OH; Wanda Faye Krick, TN; John Titus, IA; Grady Hite, NC; and Richard Habenicht, IL. Also present were Newsletter Editor Linda Titus, IA.

Recording Secretary Theresa Newcomer, PA, read the minutes of last board meeting held on Sunday, August 1, 2004. The minutes were approved as read.

The Treasurer's report was presented by Linn Schultz. We closed the year with a cash balance of \$29,285.26. Linn reported that the proper income tax forms were filed for the year 2004. We are financially sound with no liabilities. A motion was made to accept the report and seconded. The minutes were approved as read.

The Secretary, Leslie Schultz, reported that in 2003 we had 62 new members, 2004 – 18 and 2005 – 43. The 56 households which did not renew this year were sent

additional reminders. Pre-registration was down this year with only 106 registrations by the cut off date. Total convention attendance in 2003 was 361; 2004 – 348; 2005



– 245. Last year all the mugs were sold, so far this year only 52 were sold. We have 20 left and will continue to sell during the convention. Banquet reservations stand at 121 for Saturday night. Leslie presented an analysis

comparing pre-registration numbers with membership totals by state.

Rich Habenicht asked about the location of the convention and how the site is picked and also the possibility of keeping it east of Mississippi to keep it where the higher membership is located. The site is picked according to where the host club is located and who is willing to host it. The host club presents 2 or 3 possible sites, they are then visited and a decision is made by the International Club. More discussion followed on convention sites and attendance. The question was asked about whether a state club is needed to host a convention. This could change in the future.

Terry Coy reported on the sale of raffle tickets. The sale of tickets is going well. He found two nice pieces. A final report will be made at the next board meeting.

There was no report from the nomination committee at this time. The committee

consists of Jane Stork, TX, Chairperson; Bob McCaslin, IN; Allen DiMarco, PA; and Frank Huber, IL. John Titus has completed his first term and is eligible for re-election. Marlene Howard and Assid Corban have completed their 2nd terms and are not eligible for re-election.

Future convention sites are 2006, Novi, Michigan, Sheraton Hotel and 2007, Peoria, Illinois, Holiday Inn. Kentucky-Tennessee is asking to host the 2008 convention; a site has not been

contracted at this time.

The Hospitality room is well marked and if it is full, members can go into the Atrium area of the hotel.

The hotel is not hosting the ice cream social this year. The host club

is in charge and it will be held in the buffet line.

Linda Titus, Newsletter Editor, reported she needs more articles for the newsletters, especially the April and June editions.

Linda also reported on the membership committee. She took names and contacted interested individuals to help her. She got no response from anyone at that time. Following an article in the newsletter, she got a few responses with ideas on how to increase membership. One suggestion is advertising. We need to advertise, possibly need a marketing chairperson either from the board or general membership. We also need to hand out brochures whenever possible.

The Vice President will be in charge of marketing. Linda Titus made a motion to allow the Vice President to spend approximately \$2,500 for marketing purposes. It was seconded by John Titus.

Motion carried.

The Vice President will give the board updates on the marketing program.

The Code of Ethics published in one of our

newsletters was discussed. Harold Dodd, NJ, is in favor of the Code of Ethics, but questioned Item 4 which concerns a dealer giving sales receipts and a certificate of authenticity. The code was taken from another collector club and some things may not apply to our club. It was simply a newsletter item so we will leave it alone. Leslie Schultz made a motion to take no action on the Code of Ethics at this time, seconded by Wanda Krick. Motion carried.

There were no problems or negative comments from the members on the room tables.

The president announced that we will have armed security for Friday and Saturday evening from 6-10 pm.

The club carts will be taken to Michigan by Carl & Norma Tackett.

Questions were asked concerning why the Pence Auction was put in the newsletter. Members have a right to make sale announcements in the newsletter. Our responsibility is to our members. We do not publish non-member auctions.

The meeting was adjourned at 12:15 p.m.

ROOM-TO-ROOM VIEWING



Minutes From The Meetings



FIRST TIME AND NEW MEMBER MEETING THURSDAY, JULY 28, 2005



President George Kandel welcomed all new and first time attendees to the 20th annual R.S. Prussia

Collectors, Inc. Convention.

All officers and board members were introduced, including the newsletter editor.

The convention schedule and room viewing was explained and the importance of wearing nametags at all times was stressed.



The President explained the room flags and what they represent.



The Howard Greenburg Do-It-Yourself auction was explained to

all attendees.

The various seminars available were discussed. It was pointed out that members often present the seminars.

The third session on Saturday will be about insuring our collections.



Everyone was invited to the ice cream social following this meeting.



Room visitation times will be announced at the business meeting on



Saturday. Please ask permission to handle china in the individual rooms.

The members were asked how they found out about the international club.

Woody Auction was mentioned, talking with club members at shows, and also the internet site.

The new members were also told about the need for newsletter articles.

Meeting adjourned at 7:30 p.m.

WELCOME MEETING FRIDAY, JULY 29, 2005



The welcome meeting was called to order by President George Kandel at 9:00 a.m. George introduced all officers, board members, newsletter

editor and historian.

Terry Coy, Vice President, KY, took a roll call of the states and had members stand from their home states. He then honored members we lost through death since the last convention. They include Eseline Reynolds, CA; Gertrude Braxton; Bob Bettinger, VA; and Jack Hettinger.

The Heartland host club was introduced. CL Riley, President of the Heartland Club,



was introduced and thanked everyone for a good job. The convention chairperson

is Lois Walden, MO; and Hospitality chairperson is Gaye Bartell, KS. CL mentioned sights to see and



places to go while in Kansas City. If there are any concerns while at convention, see any of the Heartland group.



The Howard Greenburg do-it-yourself auction has raised over \$29,000 in the last 11 years.



Howard recognized all the contributors and persons who have helped at the auctions.

The president introduced the auction committee

consisting of Joleen Passow, Brad Witt and Marvin Heard.

The Audit committee, Joe Lemon, Carl Tackett and Ed Smith, announced that the books were audited and everything is in order.



The Nomination Committee

consisting of Jane Stork, Bob McCaslin, Allen DiMarco and Frank Huber gave a report. There are three positions open for Directors on the Board.



The nominees are John Titus (eligible for reelection); David Howard, OH; Mike Medvin, CA; Joy Litterall, OH; Ross Reeves, IN; and Miriam Corban, New Zealand. If there are any other nominees, members are asked to see Jane Stork. Elections will be held at the Saturday business meeting.



Continued on page 13

ROOM-TO-ROOM VIEWING



Minutes From The Meetings



 Continued from page 11

The Friday afternoon seminar to be presented by Joe Lemon will be cancelled due to a family emergency.

The president recognized club members who are authors. They are John Titus, Lee Marple, C.L. Riley, Eileen Barlock, and Mary McCaslin. Mary has a new book coming out in September.

Past Presidents were introduced including Bob McCaslin, C.L. Riley, Mary McCaslin and Jenny Lou Huston.

Mary Lou Bougher, Historian, announced that scrapbooks are in the hospitality room for members to browse through.

Terry Coy reported that the raffle is a great fund raiser for the club. Tickets are 3 for \$10. It is getting difficult to get pieces at a reasonable price for the raffle. We have had members donate pieces in the past. You can also purchase tickets ahead of time if you cannot make it to the convention.

The meeting adjourned at 10:00 a.m.



BUSINESS MEETING SATURDAY, JULY 30, 2005

The Business Meeting of the 20th Annual Convention of the International Association of R.S. Prussia Collectors, Inc., was called

to order by President George Kandel, IN, at 9:00 a.m. Officers present were

President George Kandel, IN; Vice President Terry Coy, KY; Secretary Leslie Schultz, IA; Treasurer Linn Schultz, IA. Board members present were Assid Corban, New Zealand; Marlene Howard, OH; John Titus, IA; Wanda Faye Krick, TN;



Grade Hite, NC; and Richard Habenicht, IL. Also present was Newsletter Editor Linda Titus, IA. The president thanked all

officers and board for a job well done. He also gave recognition to Mary Lou

Bougher, our Historian and flag lady.

Howard Greenburg



reported that the Do-It-Yourself auction was our second best sale yet. The amount raised was \$3,405. Howard thanked everyone who contributed and helped with the auction. A total of \$32,500 has been raised over the years.

CL Riley of the Heartland Club said it was a privilege to host the International Convention this year. He gave special thanks to Lois Walden, chairperson, and Gaye Bartell, hospitality room chairperson, and all club members who helped with organizing the convention.

The Auction Committee, consisting of Joleen Passow, Brad Witt and Marvin Heard, was thanked for bringing us another great auction.



Carl Tackett, Audit committee, announced that Bob Yaklin will be added to the committee for next year.



The minutes from our last business meeting were approved as written in the October Newsletter.

The Treasurer's report was as follows: Beginning balance on June 1, 2004 was \$29,732.75. Ending balance on May 31, 2005, was \$29,285.26. Both balances included a \$10,000 CD. A motion was made and seconded to accept the treasurer's report as read. Motion carried.

The Secretary reported that our total convention registrations are down this year. In 2003 total registrations were 188, 2004 total registrations were 187, and in 2005 total registrations were 151. The total 2005 pre-registration were 106; total convention attendees were 245. One hundred twenty-five persons registered for the banquet. We gained 45 new members this year, but there were 52 who did not renew. We gained 5 new members at convention. We need to work on getting new members. A motion was made to accept the report and was seconded. Motion carried.

Our Vice President, Terry Coy, has been appointed Publicity chairperson to advertise in various publications. We need to get the message out about our club. Mary McCaslin said she has articles coming out in *West Coast Peddler* and *Collector News*. Mary is having the publisher of her book put club applications in her books. If we get permission from the original author of some of our newsletter articles, we can publish those in other publications. There is also a membership application on the website that can be printed and handed out.

The Nomination committee presented the slate of persons up for elections. Three board of directors positions are open. The floor was opened for nominations. There were none from the



ROOM-TO-ROOM VIEWING



Minutes From The Meetings

 Continued from page 13



floor. Those running for nomination are John Titus, IA; David Howard, OH; Joy Litteral, OH; Miriam Corban, New Zealand; Ross Reeves, IN and Mike Medvin, CA.

The nomination committee members are Jane Stork, Allen DiMarco, Bob McCaslin and Frank Huber.

The Woody Auction gave President George Kandel a report on the auction. The auction company donated \$3,660 to the club from the proceeds of the auction.

Paul Fischer, IN, spoke about the need for new members. He said we should welcome people into our rooms without the proper badges and explain to them about our china. We could offer other hotel guests free memberships to the convention to be able to attend the seminars.

One of our new members spoke about putting the history of RS Prussia in our brochure to go along with the application form.

Tim Nance thanked the host club for a great job in the hospitality room. Discussion followed on whether there should be more money allocated for the hospitality function. LaVonne Riley said that over the years the room was open most of the time. She said we had great help from the hotel. It would have cost a lot more to have a larger room. The ice cream social was not put on by the hotel but by the host club this year. The host club should let the membership know if they need food brought. Perhaps everyone could bring something next year. The hospitality room is about members getting together to communicate. The board was given the authority to give the host club the



money needed for the hospitality room. A motion was made and seconded that the money for the hospitality room be increased by \$1,000 for needed items at their discretion. The motion carried. The nomination committee reported that

John Titus was reelected to a second term. Joy Litteral and Miriam Corban were both elected to their first term.

Fred Kunz announced that the 2007 convention will be held in Peoria, Illinois, at the Holiday Inn. The 2006 convention will be held at the Sheraton in Novi, Michigan. The Kentucky-Tennessee Club will be hosting the 2008 convention at a place to be named later.

Terry Coy reported that the raffle has raised a \$1000 so far.

The meeting was adjourned at 10:30 a.m.



BOARD MEETING SUNDAY, JULY 31, 2005

The meeting was called to order at 7:30 a.m.

The minutes from the previous board meeting were read. A motion to accept the minutes as read was made and seconded. Motion carried.

The president welcomed the new board members, Joy Litteral and Miriam Corban, for their first terms and John Titus for his second term.



The secretary reported we had 45 new memberships for 2005, but 52 households did not renew. The total membership for 2005 is 462. The total convention registrations were 152 memberships for a total of 283 persons. All of the mugs purchased for the 2005 convention have been sold. There were a total of 125 reservations for the banquet. We picked up 5 new memberships at convention and 5 renewals.

The treasurer reported a balance as of Saturday night of \$17,677.83. He needs the final hotel bill to complete report. A motion was made and seconded to accept the report as read. Motion carried.

Under new business, Grady Hite suggested moving the auction from Friday evening to Saturday, having the banquet on Friday, and room visitation on Friday. After lengthy discussion, the board felt that too many other functions would have to be moved. The board decided to leave the schedule as is. Before any changes are made, we will poll the membership to get their opinions. There

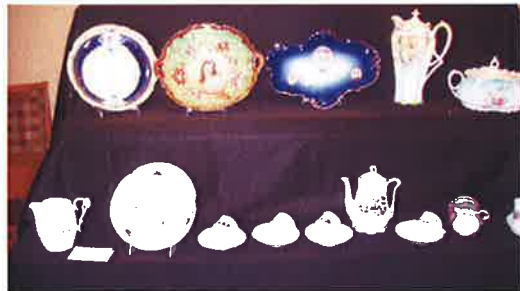
will be a note concerning this in the October newsletter. George Kandel, Grady Hite and Linda Titus will develop a questionnaire for

the newsletter.

Two board members have offered to donate pieces for the raffle for next year.



ROOM-TO-ROOM VIEWING



Minutes From The Meetings



Board Meeting

Continued from page 15

When new members join at convention or after convention during the same year, their dues will cover the current year plus the following year. A motion was made and seconded to this effect. Motion carried.

New membership brochures will be printed and distributed. Lee Marple will put together some history for the brochures. A motion was made and seconded to print 1,500 brochures and include some in the newsletters. Motion carried. Linda Titus will print more as needed. Linda Titus requested that the newsletter be printed on a quarterly basis, September, January, March and June. A motion was made and seconded to this effect. Motion carried.

Terry Coy said that it was brought to his attention that we do nothing for our junior members. We may need to look into the validity of having a junior membership. This could be included in a survey.

It was also brought to the board's attention that our website is not green, meaning it needs to be updated and be more user friendly. Terry will talk with Ken Jinde about these updates for improvement and the costs of those improvements.

The board of directors discussed and approved an association policy for complementary room use at conventions.

Member Bill Boswell brought up an idea for a price index "average" on Prussia. This could be accomplished if members would send him all auction catalogs with the prices included. He will compile the information to see if there is a demand. His address is: 10906 Hard Rock Road, Austin, Texas, 78750.

The meeting was adjourned at 9:30 a.m.

BOOYAA



Tim Nance from Naples, Florida, wowed us all with his "booyaa'ing" at the R.S. Prussia Convention Do-It-Yourself Auction. Palmer and I were at Port San Luis Harbor at Avela Beach, California a couple of weeks ago and spotted a sailboat in for repairs named Booyaa. We found the fellow who owned the boat and asked him what the word meant. He said it was Cajun slang for anything that makes you feel good, or that you like, etc.

We really enjoyed the convention, so many lovely things and friendly people. It was our third Convention and we look forward to more.

Betty and Palmer Strampe

Welcome New Members

Mark & Marjorie Shumaker
7666 E. Queen Palm Circle
Tucson, AZ 85730

Rod & Jill Dankert
911 South Sagebrush CT
Wichita, KS 67230

Thomas & Lynn Baker
8618 Blackpool Drive
Louisville, KY 40222

David Kornfuehrer
6501 Targa CT
Austin, TX 78749

Dale Gabel
400 W. 11th
Ellis, KS

Pamela Turner
3108 Crosswood Drive
Nashville, TN 37214

John R. Colgan
630 Rosewood CT
Lothian, MD 20711-9549

Sharen DeBrabender
8706 N. Oregon Ave.
Kansas City, MO 64154

Terry & Carol Seggebruch
9520 N. Brisbin
Morris, IL 60450

Dennis Warner
5004 West 79th
Prairie Villiage, KS 66208

Chresta Langh
1419 Brett Place #202
San Pedro, CA 90732

Kathy Melnichuk
1111 Arrow Raod
Toronto Ontario,
Canada M9M3B3

Please Note Change of Address:

After a recent fire, the new contact information for Bill and Becky Greene is 1-910-272-0879, or wgreene9621@NC.RR.Com.

WANTED

Chocolate pot. Lily of the Valley. Plate 636 Gaston. Need Lavendar background.
J. Alex Witten
1-540-921-3440

ROOM-TO-ROOM VIEWING



The Tradition Continues

Submitted by Linda L. Van Gundy

When I was a pre-schooler growing up in a small, Central Illinois town, I was fortunate to have my Gramma live next door. I would go visit her nearly every day. We would play Chinese checkers, draw the well dry, tic-tac-toe, or look at her photo albums. I especially liked the pictures of her Christmas tree, complete with lighted candles.

Occasionally, she would ask, "well, Linda Gail, and have you been a good girl?" Of course, I always answered in the affirmative. Then she would ask if I wanted a drink of milk. I always told her that, yes, I would. Then we would go to the kitchen. I would sit at her table while she went into her larder and got out the most beautiful cup and saucer I had ever seen. It was what she called "eggshell porcelain." With a lot of tiny, pink roses and intricate gold filigree. Then she would go to her ice box, which had to be an early 30s model, with long metal legs and the round motor mounted on top. She would pour milk into the special cup from her quart bottle of milk and bring it to the table. I would sip slowly while we "passed the time of day."

I grew up and moved away from Delavan, forgetting all about the special cup and saucer. My Gramma died in 1964 at the age of 83

When I joined the RSP club and went to my first convention at the Omni in Indianapolis, I was amazed to see what all the RSP people created. I had no idea there were so many molds, nor decorations, and totally enjoyed myself. I walked into one room and right before my eyes on the shelf was Grammas' special cup and saucer!!!

I stood there and just stared at it while all of the fond memories came flooding back. Then, I turned on my heels and went back to my room.

Shutting the door, I had a good cry for the days that were no more.

I decided shortly after that MY grandchildren should all have a special cup and saucer. I started a buying spree so each of them would have one.

When two of our grandsons were small, they came down once a week for an overnight stay. I bought two cups and saucers (RSP, of course) and put them on the kitchen table before they arrived the next time. Explaining that they could each have one, and had to be VERY good to be allowed to drink from them, they seemed to understand. Jacob, who was 3, decided he wanted fruit juice to drink, and Daniel, aged 6, wanted milk. I obliged. Before Daniel had drunk half of his milk, he decided that wasn't

special enough, and asked for a spoonful of sugar in the milk.

They surprised me, as I assumed boys wouldn't be impressed with them, but for a good 6 months after, the first words out of Jacob's mouth after he came into the house were, "Gramma, I've been good!"

Now the boys are 10 and 12, and the cups have been put away until they marry, at which time they shall have them for their children.

We have gotten our three great grandchildren special cups and saucers and given them to Karel, their Grandmother. They are now in her china cabinet, awaiting the day when the children are old enough to burst through her front door and eagerly announce, "Gramma, I've been good!"

The tradition continues...



*Leaning
in
for
a peck!*

A collage of three photographs showing an older man with white hair, wearing a blue patterned shirt, holding a small white parrot. The parrot is perched on his hand, and he is looking at it with a smile. The background is dark, suggesting an indoor setting.

Frank's love doesn't stop at R.S. Prussia. Here he is spreading some love with his girl "Gabby"



2005 CONVENTION SEMINAR

By Lee Marple

This article is going to focus on the china made by Reinhold's firm from 1910 up to the middle of 1916. It was at this later date that the events associated with WWI had caused the firm to cease production at Suhl, and shortly thereafter, inhibit the export of porcelain from Tillowitz.

In retrospect, the character of the products made for the American market changed dramatically in 1910. True, there were always yearly changes in the products offered by this firm, starting from the time we first see Reinhold's china in the trade journals of American firms. From about 1898 through 1908, Reinhold invariably incorporated a new look to the product line by changing the mold shape, embossed detail in the mold, the type of transfer and transfer subject used for the decoration. Consequently, it was possible for customers to select merchandise for each year that appeared to be quite different from the year before, but still principally made in the Art Nouveau style. American importers responded to this clever marketing strategy by purchasing enormous quantities of Reinhold's china. But styles and fashion come and go, and in 1909 we see a change to a simpler style. By 1910, the china imported by these same importers did not incorporate any aspect of the Art Nouveau style. In contrast, the wares they did buy were plainly shaped, had no embossed patterns, and were invariably decorated with floral (often stylized) transfers.

Over the years, I have noted that many collectors seem to think that Reinhold's post-1910 china is plentiful. As it turns out, our research fails to support this position. There seems to be two contributing factors that operate to make the post-1910 products

appear more common than they actually are. One is that the evolution of mold and decorating patterns was very subtle. The changes are easy to see if you have a background in botany, or have an eye for detail. But most American collectors do not make distinctions between the products imported from year to year, and tend to lump all of the post-1910 products into one group. The second factor is that there are few collectors of later products, so merchandise sells on the basis of its utility if it sells at all.

Up to now, I have focused on the products imported by the larger American concerns, the ones for which there are paper trails that illustrate the products they carried. There were, in fact, a number of smaller firms that purchased Reinhold's china, and they bought merchandise that was quite different. In order to assess the importance of these firms, we need to examine the nature of Reinhold's business, and we can do so from the information presented in Brend Hartwich's research, and presented in his thesis that was later translated by Ron Capers. It is clear from Hartwich's comments that Reinhold's operation conformed to the "80/20" Rule, in that 80% of their sales were generated by only 20% of their customers. In short, 80/20 firms have a few good customers, and a lot of "hangers on." It is very clear from Hartwich's data that the major part of production was shipped to the North American market. Only a few firms were involved, notably Butler Brothers, Sommers & Co., Falker Stern & Co., Montgomery Ward (all in the US), and Nerlich in Canada. The remaining 20% was sold worldwide to many other firms. As a group, the products these firms

purchased were decorated with transfers of many other subjects. The list includes portraits, scenes, landscapes, still-life subjects, buildings, boats, planes, birds, and animals. It is of interest to note that almost every theme used for decoration before 1910 was used afterward as well.

We know these interesting products were sold worldwide, owing to in part, the trademarks that appear on them. In retrospect, it is evident to us that there is method to the apparent madness involved in Reinhold's marking system. For the North American marketplace, post-1910 products were marked in some fashion with "R.S. Germany," frequently in script, or with R.S. Tillowitz in combination with the patented Wreath and Star trademark. China marked with the Wreath and Star trademark, with or without "Suhl," was destined for European countries, South America, and England. We have found this out by recording the provenance of objects bearing this mark. Finally, the RS Poland mark, in combination with the Wreath and Star trademark, was used on virtually all of Reinhold's ware that was trans-shipped from England to Australia and New Zealand. The use of this mark "down-under" has been the subject of several presentations by the Corbans.

My goal for this presentation is to show representative examples of post-1910 products. As you might expect, examples marked with one or more forms of the RS Germany logo will predominate. By no means will this presentation be complete, for with few exceptions, the slides are of objects from our collection, and we have not been able to acquire examples of all of the known decorations.





Images:
1- Charger, a common pattern typical of later ware, but unusually large size.

2- Cake plate, cobalt décor. This mold pattern first sold in 1910, and is commonly decorated in other colors. The use of cobalt was infrequent after 1910.



3- Cake plate, late mold between 1915-16, with surreal bearded iris (surreal, for iris of this shape and coloration did not exist at the time.)



These few examples shown here represent some of the more than 90 % of the china shipped to this country. We know this from the illustrations in all of the trade catalogs we have examined. Now let us look at some of the 10% that came in though the lesser vendors.

4- Cake plate, 1910 mold, GRSG, but with an unusual combination in décor



5- Large plate, 1910-11 mold, example made for Roth (under contract) with girl with umbrella décor. Most examples from this product line were signed by the artist, generally in the lower right quadrant.

6- Cake plate, 1910 mold, now with full scenic decoration, woman/sheep



7- Large plate, RSG/Roth scenic, woman with umbrella, and child picking flowers. The objects in this series are decorated by the outline transfer process, with all of the color applied by hand.



8- Large plate, RSG script, scenic, equivalent to the earlier "mill" scene.



9- Cracker jar, (bull), plate, (cow and calf) animal scenics. RSG/Roth



10- Triangular bowl, RSG in script, shepherd scene with satin finish



11- Egg shape box, RSGS+ gold Steeple mark, scenic décor.

12- Plate, made for Drew and Co. (promotional item?) of Jacksonville, Florida



13- Plate, RSG hummingbirds, (different from earlier hummingbirds in that the bug is missing.) The complete series consists of six different birds.



14- Vase, RSG Tillowitz, black geese. Very elaborate gold border, not sure how many different birds appear in this décor.



15- Cup/saucer, RSG Tillowitz, scenic swans decoration (the same type of background appears on the example with Wright plane decoration.)



16- Vases with silver collars, marked with SC/L in gold. At least two series of transfers were used for these blanks. One is decorated with Flora/Diana, the other with various scenes that include animals. We do not know what English firm applied silver to the rims. The finished ware was sold by Shore and Coggins, (London)



17- Vases with silver collars, marked with SC/L.

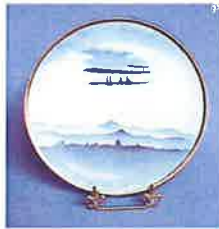


18- Plate, black and white, with windmill, marked with RSG. There are two variants of this scene, one



with a moon behind the clouds to the right of the windmill (imported by Burley and Tyrrell), the other without the moon as in the example shown here.

19 - Plate, blue/black Wright airplane, appears to be the Model A flyer that made a flight in France in 1908.



20- Vase, man/woman/dog marked with RS Suhl in green. This is the "RS Poland" shape vase, a shape that does not seem to have been used for the North American market.

21- Cracker jar decorated with Children/bench, the second transfer in a set of two. Marked with RSG. Nearly all examples I know of with this decoration have come from Canada.



22- Cupids RSG (only one known scene and different from RSP cupids)

23- Small cake plates, RSG with cottage scene and mill scene



24- Small plate, RSG with an unusual windmill scene. The windmill also appears of objects marked with the RS Poland trademark.



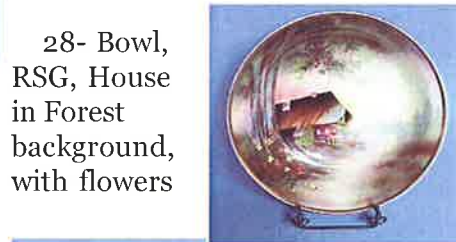
25- Cake plate, UM, windmill/boat scene. Marked examples (RSG) in this décor are common.



26- Plate, RSG, House in Forest background, with woman/cow. While there is a lot of handwork in the decoration of items in this series, the pieces are generally not signed by the artist.



27- Chocolate pot, RSG, House in Forest background, with man/horse



28- Bowl, RSG, House in Forest background, with flowers



29- Vase, RS Poland, House in Forest background, with shepherd.

30- Tray, RS Suhl, maidens, three/one with dove. Not sure how many different transfers were used in this series, but there are at least two.



31- Handled tray, RS Suhl, maidens décor. Most pieces with this décor are vases, ranging in size to 17 inches.



32- Vase, RS Suhl, maidens décor, four in ring with pink/yellow dress. There are two transfers in this sub-series where the

women are dancing. The one shown here, and a very similar transfer with women in lavender/blue dress.

33- Vase, RS Suhl, with maidens décor.



34- Handled tray, RS Tillowitz, maidens with urn décor.

35- Vase, RS Suhl, homecraft scenic décor (woman spinning, woman tending sheep). There are four transfers in this series.



36- Small bowl, RSG, black silhouette. There are five



images in this series, though only four appear on the five individual berry bowls of this set. Not many examples of this décor exist. The black silhouette transfers were used by other porcelain manufacturers, as were full color transfers of exactly the same subjects. The key to Reinhold's china is the shape of the mold.



37. Tray, RS Suhl, floral décor on black background. When floral patterns were used

for markets other than North America, they were exceptionally well done.

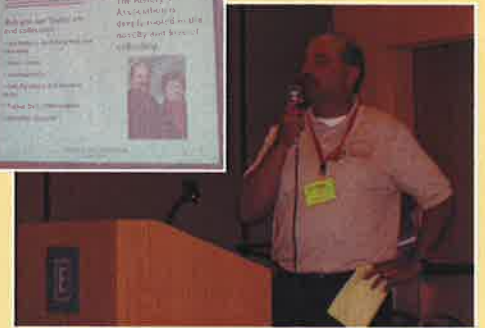
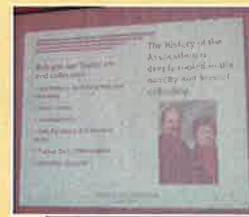
As you can see from these examples, the china made by Reinhold's firm during the 1910-1917 period was really quite diverse, and for the most part, functional. The large vases, ranging in size from 10 1/4 to 17 inches were undoubtedly made for commercial use, perhaps in first-rate hotels and other places where large vessels were needed to hold large floral arrangements. In the main, the quality of the ware made for other countries far surpassed that made for the United States, a fact that is only now becoming generally recognized. I hope this short presentation of pre-war examples stimulates your collecting interest, or at the very least provides a better understanding of the scarcity of these products in this country.

2005 SEMINARS

Lee Marple presented an educational and informative seminar on RS Germany. It was obvious that much hard work, research, planning and effort was put into his seminar for the R.S. Prussia Club.



Rob Tucker's seminar on Insuring Your Porcelain was a terrific way to help R.S. Prussia members protect their valuable assets.



Future Conventions

2007 CONVENTION

The Illinois Club has asked to host this Convention.

2008 CONVENTION

Kentucky - Tennessee

Surely You Didn't Pay...

By: Annette Hite

There are many styles of antique shopping. One style is the very slow thoughtful methodical shopper who stops to look at everything, appreciating the aesthetics for their own sake. This person also touches many items and admires their shapes, textures and color. The unusual and quirky are so very appealing and those objects that obviously were handcrafted or enhanced hold special charm. I am that shopper. It takes me a LONG time to pursue a shop. Another style of shopper is the one built for speed. Cover the most space; see the largest number of things in the least amount of time. Not that they don't see beauty; they most certainly do but they also pursue the rare, the unusual, the specific, the underpriced. They enjoy the rapidfire search, the quest....the FIND. These people more than the former are the accumulators and/or they resell to other aesthetes or other accumulators. They love the bargain, the value, the investment. That's my Grady! An apt metaphor for these two shopper types would be the rainbow. I can stand and admire how the colors climb and change in a rainbow and feel a tear fill the corner of an eye. Grady, if he could, would dash to capture the cache of gold at each end.

We were headed east bringing to a close our visits, vacation activities and adventures. It was time to go home. We were miles from where we'd spend the night but could stop at one more shop before closing time (in our experience a large portion of antique shops close by 5:00PM). A billboard alerts us to a shop five miles down the road so we'll have at least forty-five minutes to shop. The proprietor greets us and Grady is "off".... as the shelving is low I watch him proceed up one aisle,

down the next and now out of sight. I meander. I touch. I appreciate. I hear him on the creaky upstairs level... up one aisle, down the next. He's covered over one half of the store and I've barely started. I hear him descend the creaky stairs. He goes to the far back room now. I decide, too, that I'm almost finished, almost ready to go. Home beckons even though it's still two days away. Just one more booth for me and then I'll meet Grady at the door. But what is this? A tiny cup and saucer. No, it can't be! A miniature R. S. Prussia one! They are just so hard to find (Beauty for the first style of shopper, rare for the second). But it is! I don't pick it up but reach gently for the tag first...no use getting my hopes up that it'll go home with me. There's a four digit number. And the decimal is in the right place! \$10.00! Ten dollars? I need to pick this up and find its flaws. Does it have a handle? chips?

hairlines? It is in pristine shape! I look quickly around the booth for more. I'm usually not so greedy! I've just paid for the cup and saucer and the lady is handing me the small bag with my treasure as Grady approaches, empty handed. He looks at me as if to ask a question but joins me in adieu to the lady. We usually inspect and consult on purchases and I usually let him pay, but not this time.

As we get close to our car he unlocks the truck as if I should put the purchase in a packing box for safety. I shake my head "No" and open the car door instead. He doesn't put the key in the ignition. He waits. He is just so curious. "Well, what did you buy?" "Oh, just a little something," I replied, gently removing the tiny cup with its price tag intact. He cradles the cup in his hand, finds no damage. "Surely you didn't get this for \$10.00!" As I pull out its perfectly mint and matching saucer, I confess, "No, I got it for \$9.00."



Jack Bailey, son of the late charter member Helen Bailey, came to convention and brought his mother's very rare R.S. Prussia epergne for members to view once again, also allowing new members the chance to see this unusual piece.



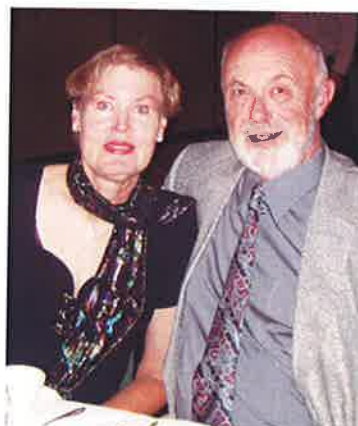
Banquet Time



Banquet Time



Its a Family Affair!



Banquet Time



Everyone take notice! Larry remembered his pants this year!



The Yearly Rituals!



Assid leading the members who dare to brave the annual "hokey???"



Embassy hotel staff hostesses



Installation of board members



Auction

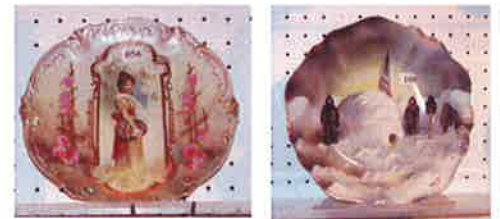
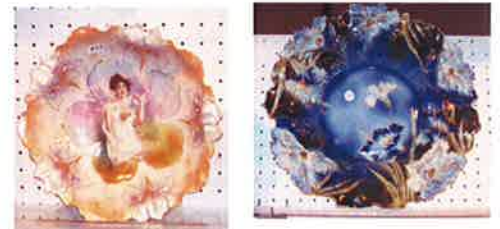


2005 Convention Auction • Friday, July 29, 2005

Hosted By Woody Auction Service

The 2005 Convention Auction was brought to the club by Woody's Auction Service. John and Jason Woody along with their crew sold xxx lots to the large crowd of eager R.S. Prussia enthusiasts. Below is a list of the items and their selling prices.

Lot#	Item Description	Winning Bid
1	10 3/4" UNMARKED PRUSSIA LEAF MOLD 10E BOWL -	125
2	11" RSP TANKARD - WHITE & LIGHT GREEN W/PINK & WHITE ROSE DECOR - SATIN FINISH	225
3	UNMARKED PRUSSIA SUNFLOWER MOLD 626 CREAMER & COVERED SUGAR -	60
4	10 3/4" RSP MOLD 91 BOWL -	225
5	10" RSP SWAG & TASSEL MOLD 155 TWO HANDED CAKE PLATE -	250
6	8 3/4" RSP IRIS MOLD PLATE -	75
7	10 1/2" UNMARKED PRUSSIA RETICULATED MOLD BOWL -	150
8	10 1/2" RSP MOLD 211a BOWL-N-BOWL -	130
9	5" RSP POINT & CLOVER MOLD 643 SYRUP PITCHER -	200
10	9 1/2" RS STEEPLE MOLD 15 CHOCOLATE POT W/(4) MATCHING CUPS & SAUCERS -	625
11	11" RSP MOLD 113 BOWL -	1,300.00
12	10" RSP MOLD 98 TWO HANDED CAKE PLATE -	210
13	11" RSP SWAG & TASSEL MOLD 155 BOWL -	450
14	12 1/4" RSP SUNFLOWER BOWL CELERY TRAY -	150
15	10 1/2" RSP IRIS MOLD 25 BOWL -	1,650.00
16	RSP MOLD 617 PEDESTAL CREAMER & SUGAR -	175
17	10 1/2" RSP IRIS MOLD 25 BOWL -	2,500.00
18	9 1/2" RSP IRIS MOLD MASTER BOWL & (3) MATCHING BERRY DISHES -	275
19	8 1/2" RSP MOLD 91 PLATE -	125
20	10" RSP POINT & CLOVER MOLD 643 CHOCOLATE POT W/(4) MATCHING CUPS & SAUCERS -	700
20A	EXTRANICE! 10" UNMARKED PRUSSIA LILY MOLD CHOCOLATE POT -	3,000.00
21	11 3/4" RSP FLEUR DE LYS MOLD 9 DRESSER TRAY -	1,250.00
22	10 1/4" RSP MOLD 300 TWO HANDED CAKE PLATE -	175
23	10 1/2" UNMARKED PRUSSIA (FIVE SIDED) LILY MOLD 29 BOWL -	950
24	9 1/2" RSP CARNATION MOLD COBALT BLUE CHOCOLATE POT -	2,750.00
25	13 1/2" RSP MOLD 304 BUNN TRAY -	1,850.00
25A	17" RS SUHL (GREEN MARK) TWO HANDED VASE -	7,000.00
26	10 1/2" RSP MOLD 340 BOWL -	130
27	10 1/2" RS STEEPLE FLORAL MOLD BOWL -	950
28	9" RSP IRIS MOLD DEMI TASSE POT W/(4) MATCHING CUPS & SAUCERS -	550
29	10" UNMARKED PRUSSIA MOLD 98 BOWL -	625
30	VERY RARE! 11 1/2" RSP CARNATION MOLD TANKARD -	3,000.00
30A	BEAUTIFUL! 15" RSP CARNATION MOLD CENTER PIECE BOWL -	7,500.00
31	6" RSP MOLD 343 PLATE -	175
32	6" RSP MOLD 343 PLATE -	225
33	6" RSP MOLD 343 PLATE -	300
34	RSP MOLD? BERRY SET - YELLOW & BLUE W/ ROSE & DAISY DECOR -	230
35	11 3/4" RSP MOLD 645 "RIBBON & JEWEL" TANKARD -	1,800.00
36	UNMARKED PRUSSIA MUSTACHE CUP AND MATCHING SAUCER -	160
37	9" RSP PLATE - BROWN TONES W/ SWAN DECOR	200
38	9 3/4" RSP CARNATION MOLD BOWL -	275
39	11" UNMARKED PROV SAXE STYLE BOWL -	140
40	10 1/4" UNMARKED PRUSSIA MOLD 98 BOWL -	225
41	8 1/2" RSP ICICLE MOLD PLATE -	250
42	9" RSP STIPPLE MOLD COFFEE POT -	225
43	8 1/2" RSP LEAF MOLD 10d BOWL -	60
44	10" RSP MOLD 584 CHOCOLATE POT -	1,000.00
45	10 1/2" RSP MOLD 645 "RIBBON AND JEWEL" CHOCOLATE POT -	1,500.00
46	4 1/2" X 9" COBALT BLUE CARNATION MOLD TWO HANDED CRACKER JAR -	2,100.00
47	11" RSP UNIQUE MOLD BOWL -	85
48	10 1/2" RSP UNIQUE MOLD BOWL -	275
49	10 1/2" RSP CARNATION MOLD BOWL -	170
50	EXTREMELY RARE! 10" UNMARKED RSP MOLD 641 "ICICLE" CHOCOLATE POT W/(6) MATCHING	11,500.00
50A	10 3/4" RSP MOLD 329 BOWL -	225
51	9" RSP TWO HANDED COVERED URN -	325
52	10 1/2" RSP MOLD 95 BOWL -	650
53	6" X 9" RSP MEDALLION MOLD CIDER PITCHER -	500



54	10" RSP JEWEL MOLD TWO HANDLED VASE -	125
55	10" RSP TWO HANDLED CAKE PLATE -	300
56	8 1/2" RSP KEYHOLE CHARMERS PLATE	1,900.00
57	7" RSP HANDLED EWER -	220
58	4" X 7" RSP COMPOTE - YELLOW & GRAY W/ YELLOW FLORAL DECOR	100
59	9" RSP JEWEL MOLD TWO HANDLED VASE -	225
60	11" RSP FLEUR-DE-LYS MOLD 9 CAKE PLATE -	375
61	8 1/2" UNMARKED PRUSSIA, HIDDEN IMAGE PLATE -	125
62	12" UNMARKED PRUSSIA CELERY TRAY - PINK W/ FLORAL DECOR	90
63	10" UNMARKED PRUSSIA, HIDDEN IMAGE BOWL - WHITE & GREEN	190
64	9" UNMARKED PRUSSIA HIDDEN IMAGE CHOCOLATE POT - WILD FLORAL DECOR - lid repair	50
65	12" UNMARKED PRUSSIA, HIDDEN IMAGE MOLD, TEAR DROP SHAPED BOWL -	500
66	UNMARKED PRUSSIA MOLD 664 PEDESTAL CREAMER & SUGAR -	225
67	RARE 6" RSP IRIS MOLD PIN TRAY -	575
68	4 1/2" X 8 1/2" RSP MOLD 632 TWO HANDLED COVERED CRACKER JAR -	750
69	11 3/4" UNMARKED PRUSSIA MOLD 98 CHARGER -	275
70	EXTREMELY RARE! 12 1/2" UNMARKED PRUSSIA MOLD 569 TANKARD -	13,000.00
71	RSP MOLD 536 CREAMER & SUGAR -	125
72	RSP COBALT BLUE IRIS MOLD COFFEE POT & MATCHING SAUCER!	225
73	11 3/4" RSP CARNATION MOLD DRESSER TRAY -	225
74	8 1/2" RSP THREE HANDLED BASKET -	225
75	BEAUTIFUL! 9 1/4" RSP MEDALLION MOLD BOWL W/ (6) MATCHING BERRY BOWLS -	2,750.00
75A	UNMARKED PRUSSIA CREAM PITCHER & MATCHED UNDERPLATE -	80
76	9" RSP MOLD 343 "KEYHOLE" PLATE -	1,250.00
77	10 1/2" RSP MEDALLION MOLD TWO HANDLED CAKE PLATE -	1,400.00
78	UNMARKED PRUSSIA STYLE COBALT BLUE CHILD TEA SET IN ORIGINAL BOX -	750
79	11" RSP TWO HANDLED CAKE PLATE -	150
80	RARE 3 PIECE UNMARKED PRUSSIA, CARNATION MOLD TEA SET -	5,000.00
81	10 1/2" RSP CARNATION MOLD BERRY BOWL W/ (6) MATCHING BERRY DISHES -	275
82	RARE 6 PIECE CHILDS TEA SET -	450
83	10 1/2" RS STEEPLE MOLD BOWL -	775
84	10 1/2" RS STEEPLE MOLD BOWL -	550
85	10 1/2" RS STEEPLE MOLD BOWL -	725
86	10 1/2" ROYAL COBURG BOWL -	600
87	11 1/4" RSP IRIS MOLD DRESSER TRAY -	850
88	11 1/2" RSP CARNATION MOLD DRESSER TRAY -	1,800.00
89	10 3/4" RSP MOLD 259 BOWL -	130
90	7" UNMARKED PRUSSIA TWO HANDLED PILLOW SHAPED VASE -	550
91	ROYAL COBURG (STEEPLE MOLD 14) CREAMER & SUGAR -	575
92	9 1/4" UNMARKED PRUSSIA MOLD 343 CHOCOLATE POT -	500
93	9" RS STEEPLE MOLD 7 DEMI TASSE POT -	700
94	11 1/2" RSP ICICLE MOLD DRESSER TRAY -	125
95	WOW! 9" RSP CARNATION MOLD LEMONADE PITCHER -	3,400.00
96	10" RSP MOLD 260 BOWL -	375
97	10" RSP MEDALLION MOLD TWO HANDLED CAKE PLATE -	1,200.00
98	8 1/2" UNMARKED PRUSSIA PLATE - GREEN, YELLOW & PINK COLORS W/ MILL SCENE DECOR	120
99	6 3/4" RSP MOLD 652 CRACKER JAR -	950
100	EXTREMELY RARE! 10" RSP ADMIRAL PERRY ARCTIC EXPEDITION BOWL -	7,000.00
100A	9 1/2" RSP MOLD 510 CHOCOLATE SET!	775
101	RARE! 9 1/2" RSP MOLD 457 CHOCOLATE POT -	1,000.00
102	11" RSP LILY MOLD TWO HANDLED CAKE PLATE -	1,000.00
103	8 1/2" RSP TWO HANDLE JEWEL MOLD VASE -	200
104	9 1/4" UNMARKED PRUSSIA MORNING GLORY MOLD CHOCOLATE POT -	300
105	5 1/2" RSP MEDALLION MOLD PIN TRAY -	275
106	RSP MOLD 536 SHAVING MUG -	30
107	RSP CARNATION MOLD CREAMER & SUGAR -	110
108	6 1/2" RSP FLASK SHAPED TWO HANDLED VASE -	275
109	4" X 8 3/4" ROYAL VIENNA (PRUSSIA MOLD SIMILAR TO 664) FOOTED FERNER -	175
110	10 3/4" RSP ICICLE MOLD BERRY BOWL W/ (6) MATCHING BERRY DISHES -	950
111	RSP ICICLE MOLD CREAMER & SUGAR -	650
112	4 1/2" UNMARKED PRUSSIA HEART SHAPED HIDDEN IMAGE BOX -	100
113	(9) PIECE UNMARKED PRUSSIA CHILD TEA SET -	525
114	5 1/2" UNMARKED PRUSSIA PLATE - THREE SCENE: SWAN, PHEASANT & SWALLOW DECOR	275
115	10 1/2" UNMARKED PRUSSIA MOLD 584 CHOCOLATE POT -	950
116	9" ROYAL VIENNA (PRUSSIA MOLD 960) TWO HANDLED VASE -	650
117	11 3/4" UNMARKED PRUSSIA LILY MOLD 29 BOWL -	550
118	6 1/2" RSP MOLD 704 CRACKER JAR -	325
119	9 1/2" UNMARKED PRUSSIA TWO-HANDLED VASE -	250
120	RARE! 14" UNMARKED RS SUHL MOLD 3 TWO HANDLED VASE -	1,500.00
121	9 3/4" UNMARKED PRUSSIA PILLOW SHAPED TWO-HANDLED VASE -	300



122	RSP SERVING DISH - WHITE & GREEN W/ FLORAL DECOR	300
123	4" RSP SCUTTLE MUG W/ MIRROR -	900
124	10" UNMARKED PRUSSIA LILY MOLD 29 BOWL -	900
125	10 1/2" UNMARKED PRUSSIA LILY MOLD 29 BOWL -	825
125A	10 3/4" RSP MOLD BOWL -	275
126	8" RSP MOLD 932 TWO HANDED PEDESTAL VASE -	1,300.00
127	8 1/2" UNMARKED PRUSSIA MOLD 584 CHOCOLATE POT -	1,300.00
128	11 3/4" RSP CARNATION MOLD BOWL -	500
129	7 1/2" RSP CARNATION MOLD PLATE -	25
130	7" RSP EIGHT SIDED HUMIDOR -	300
131	RSP CARNATION MOLD MUSTARD POT -	375
132	10" UNMARKED PRUSSIA MOLD 98 BOWL -	3,100.00
133	10 1/2" RSP LILY OF THE VALLEY LEAF MOLD BOWL -	250
134	9 1/2" RSP STIPPLE MOLD CHOCOLATE POT -	125
135	UNIQUE PAIR 10" DRESDEN MARKED THREE HANDED VASES -	600
136	11" UNMARKED ROYAL VIENNA EWER -	2,500.00
137	11 1/2" RSP MOLD 259 DRESSER TRAY -	100
138	RSP STIPPLE MOLD SHAVING MUG W/ BEVELED MIRROR -	175
139	5" X 9" RSP MOLD 632 TWO HANDED CRACKER JAR -	175
140	RARE! 10" UNMARKED ROYAL VIENNA THREE HANDED VASE -	900
141	10 1/2" RSP UNIQUE MOLD BOWL -	170
142	11" RSP ICICLE MOLD TWO HANDED CAKE PLATE -	200
143	10 1/2" RSP MOLD 90 BOWL -	160
144	RARE SIZE! 15" RSP CARNATION MOLD BOWL -	1,800.00
145	5 1/4" RS SUHL VASE -	250
146	PAIR 6" UNMARKED PRUSSIA CANDLESTICK HOLDERS -	140
147	10 1/2" RS GERMANY BOWL -	125
148	7 1/2" UNMARKED PRUSSIA LILY MOLD 517 CRACKER JAR -	500
149	4 1/4" X 7" STAR MARK CUSPIDOR -	100
150	THREE PIECE RS GERMANY TEA SET -	80
150A	5" X 9" UNMARKED PRUSSIA ICICLE MOLD TWO HANDLE CRACKER JAR -	1,050.00
151	RS TILLOWITZ SYRUP PITCHER W/ MATCHING UNDERPLATE -	20
152	8 3/4" REINHOLD SCHLEGELMILCH PLATE -	160
153	8 1/2" UNMARKED PRUSSIA LILY MOLD 29 PLATE -	250
154	8 1/2" UNMARKED PRUSSIA LILY MOLD 29 PLATE -	230
155	8 1/2" UNMARKED PRUSSIA LILY MOLD 29 PLATE -	250
156	8 1/2" UNMARKED PRUSSIA LILY MOLD 29 PLATE -	240
157	12 1/4" RSP IRIS MOLD CELERY TRAY -	100
158	9 1/2" UNMARKED PRUSSIA HIDDEN IMAGE TWO HANDED CAKE PLATE -	550
159	12" UNMARKED PRUSSIA LILY MOLD CHARGER -	350
160	8 3/4" RSP ICICLE MOLD PLATE -	375
161	9" UNMARKED PRUSSIA HIDDEN IMAGE BOWL -	150
162	5" RSP CABBAGE MOLD HAIR RECEIVER - TAN, LAVENDER & GREEN COLORS W/	225
163	4 1/2" RSP MOLD 909 SALESMAN SAMPLE VASE -	200
164	10 1/2" RS STEEPLE MOLD BOWL -	550
165	10 1/2" UNMARKED PRUSSIA LILY MOLD BOWL -	700
166	11 1/2" RSP MOLD 587 TANKARD -	450
167	11" ROYAL VIENNA (PRUSSIA MOLD 956) TWO HANDED VASE -	200
168	12 1/2" UNMARKED PRUSSIA LILY MOLD CELERY TRAY -	175
169	5 1/2" X 9 1/2" RSP MOLD 508 TWO HANDED CRACKER JAR -	500
170	5 1/4" X 9" UNMARKED GERMANY CIDER PITCHER -	550
171	10 1/2" RSP ACORN MOLD 1 BOWL -	230
172	10" UNMARKED PRUSSIA LILY MOLD 29 MASTER BOWL W/ (4) MATCHING BERRY BOWLS -	1,800.00
173	10" PROV SAXE TWO HANDED CAKE PLATE -	20
174	9" RSP MOLD 259 BOWL -	90
175	10" UNMARKED PRUSSIA MOLD 98 TWO HANDED CAKE PLATE -	650
175A	17" RS SUHL (GREEN MARK) TWO HANDED VASE -	700
176	RSP MOLD 509a MUSTARD POT -	95
177	11" RSP MOLD 259 TWO HANDED CAKE PLATE -	150
178	RSP MUSTARD POT - CREAM, PINK & GREEN TONES W/ POPPY DECOR	130
179	10 3/4" RSP UNIQUE MOLD BOWL -	450
180	PAIR 9 1/2" DRESDEN MARK TWO HANDED VASES -	300
181	9 3/4" RS STEEPLE MOLD BOWL -	300
182	4 1/2" ROYAL VIENNA HANDED EWER -	450
183	9 1/2" PROV SAXE PLATE -	75
184	6" RSP MOLD 93 PLATE -	180
185	11 1/2" RS GERMANY RECTANGULAR SHAPED DRESSER TRAY -	125
186	6" RS GERMANY PLATE -	40
187	8 1/4" RS GERMANY PLATE -	110



188	9" RS GERMANY RELISH TRAY -	100
189	10 1/4" RS GERMANY OVAL TRAY -	110
190	RS GERMANY SUGAR BOWL -	70
191	8 1/2" RSP MOLD 82 PLATE -	450
192	6 1/2" RS SUHL (PRUSSIA MOLD 343) PLATE -	25
193	5" ROYAL VIENNA TWO HANDED VASE -	425
194	UNMARKED PRUSSIA CONDIMENT SET - WHITE W/ GREEN HIGHLIGHTS AND PINK FLORAL DECOR	400
195	11 3/4" RSP ICICLE MOLD TANKARD -	2,300.00
196	5 1/2" PROV SAXE SCALLOPED BOWL -	100
197	PROV SAXE DEMI TASSE CUP & SAUCER -	150
198	10 1/2" RSP MOLD 211a BOWL -	140
199	5" EDWIN SCHLEGELMILCH TWO HANDED BOWL -	25
200	11" RSP HONEYCOMB MOLD BOWL W/ (6) MATCHING BERRY DISHES -	625
201	10 1/2" ICICLE MOLD MASTER BERRY W/ (6) MATCHING DISHES -	650
202	4 1/2" RS PRUSSIA TWO HANDED VASE -	350
203	9 1/4" RSP CARNATION MOLD RELISH TRAY -	125
204	9 1/2" PROV SAXE PLATE -	200
205	10" RSP MOLD 644 CHOCOLATE POT W/ (6) MATCHING CUPS & SAUCERS -	800
206	PRETTY 10 3/4" RSP SUNFLOWER MOLD BOWL -	450
207	12" RSP CELERY TRAY -	100
208	6" RSP SUNFLOWER MOLD CRACKER JAR -	
209	RSP MOLD 642 SHAVING MUG -	110
210	9 1/2" RSP SUNFLOWER MOLD BOWL -	150
211	RSP CARNATION MOLD CREAMER & SUGAR -	350
212	7" UNMARKED PRUSSIA MOLD 627b CRACKER JAR -	550
213	12" RSP MOLD 259 CELERY TRAY -	40
214	5 3/4" UNMARKED PRUSSIA LILY MOLD BERRY BOWL -	200
215	RSP MOLD 659 THREE PIECE TEA SET -	700
216	8 3/4" UNIQUE MOLD PLATE -	210
217	9" RS SUHL MOLD 15 VASE -	220
218	11" RS STEEPLE MOLD TWO HANDED CAKE PLATE	200
219	6" ROYAL VIENNA (PRUSSIA MOLD 907) BALL SHAPED VASE -	125
220	7" UNMARKED PRUSSIA STYLE POT - YELLOW, MAROON & BLUE W/ GOLD HIGHLIGHTS	70
221	6 1/4" RS SUHL VASE -	60
222	VERY UNIQUE! 9 1/4" RS GERMANY LAZY SUSAN BOWL W/ (3) MATCHING BERRY BOWLS -	110
223	PAIR 7 1/2" ES GERMANY (PROV SAXE) TWO HANDED VASES -	240
224	4 1/4" RS GERMANY (WINGED EAGLE MARK) THREE HANDED SPOONER -	275
225	8" UNMARKED PRUSSIA MOLD 921 TWO HANDED VASE -	1,600.00
226	5 1/2" RS GERMANY SIDE HANDLE DEMI TASSE POT -	140
227	UNMARKED PRUSSIA CARNATION MOLD MUSTARD POT	900
228	5 3/4" PROV SAXE TWO HANDED VASE -	375
229	5 1/2" RSP MOLD 207 BOWL -	125
230	11 3/4" RSP CARNATION MOLD BOWL -	290
231	10 3/4" RSP IRIS MOLD BOWL -	2,500.00
232	7" RSP POINT & CLOVER MOLD 643 CRACKER JAR -	200
233	13 1/2" RSP CARNATION MOLD TANKARD -	500
234	8" ROYAL SAXE TWO HANDED COVERED URN -	110
235	11 3/4" RSP MOLD 90 BOWL -	875
236	7 1/2" X 9" RSP THREE HANDED BASKET -	300
237	13" RSP PLUME MOLD 465 TANKARD -	525
238	PAIR 10" RS GERMANY FOUR SIDED CANDLE STICK HOLDERS -	60
239	5" X 9" RSP MOLD 509 TWO HANDED CRACKER JAR -	450
240	9 3/4" RS GERMANY (SUNFLOWER MOLD) CHOCOLATE POT W/ (4) MATCHING CUPS & SAUCERS	300
241	11 3/4" RSP MOLD 586 TANKARD -	1,900.00
242	5" X 9 1/2" RSP MOLD 536 TWO HANDED CRACKER JAR -	220
243	5 1/4" RSP MOLD 510 CRACKER JAR -	375
244	7 3/4" RSP MOLD 932 PEDESTAL TWO HANDED VASE -	450
245	9" RSP CARNATION MOLD LEMONADE PITCHER -	300
246	RARE SHAPE! 7" RSP EGG CRATE MOLD HANDED BASKET -	425
247	THREE PIECE UNMARKED PRUSSIA OLD STYLE TEA SET -	300
248	RSP MOLD 627 CREAMER & SUGAR -	175
249	10 1/2" RSP MOLD 207 BOWL -	300
250	RARE SHAPE! 5 1/2" RSP CHAMBER STICK W/ MATCH HOLDER -	200
251	10" RS SUHL BOWL -	170
252	5" X 9" UNMARKED PRUSSIA LILY MOLD TWO HANDED CRACKER JAR -	175
253	5" X 9" UNMARKED PRUSSIA MOLD 339 TWO HANDED CRACKER JAR -	130
	183140	

